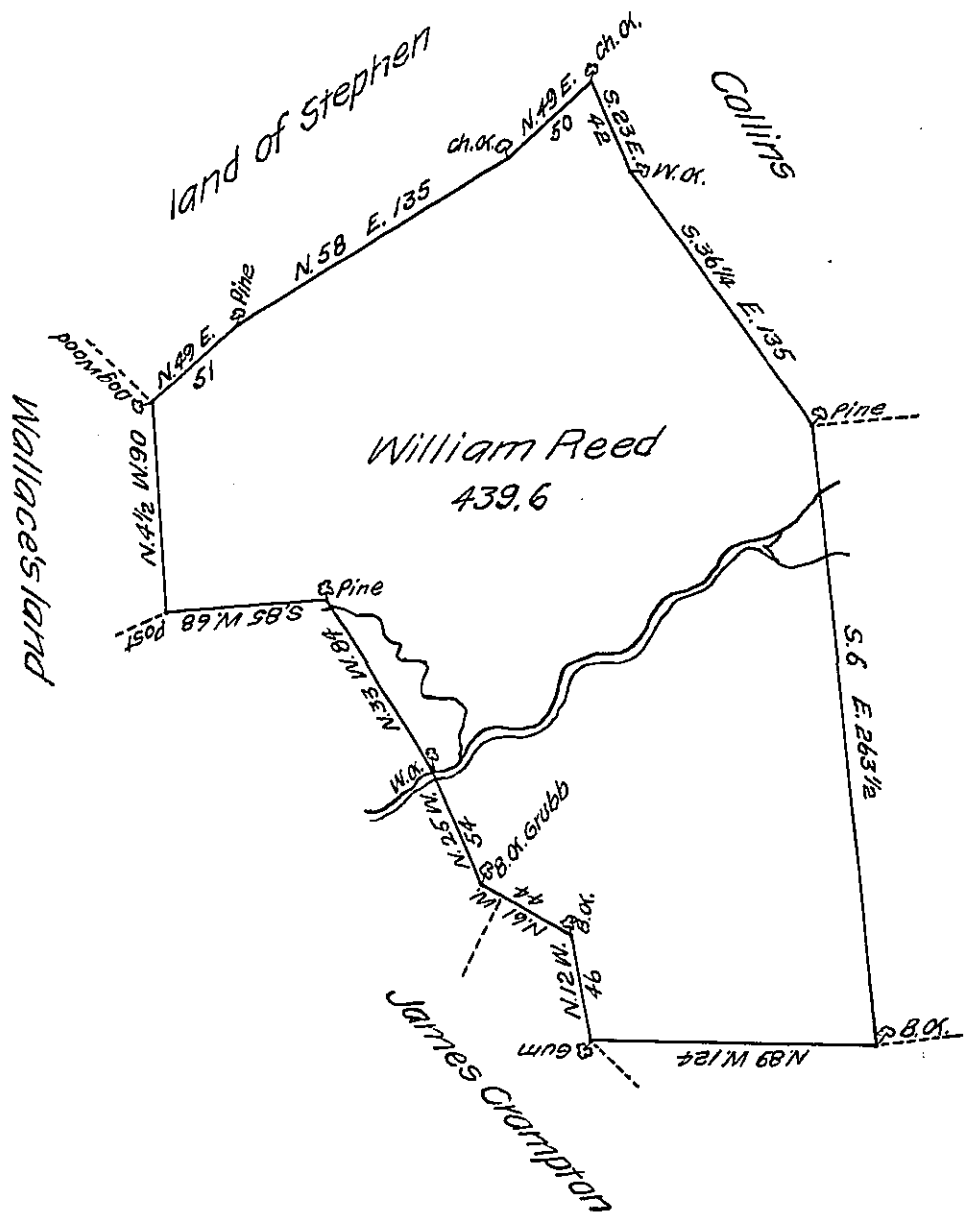


Courses & Distances

- N. 12 W. 46
- N. 61 W. 44
- N. 25 W. 54
- N. 33 W. 84
- S. 85 W. 68
- N. 4 1/2 W. 90
- N. 49 E. 51
- N. 58 E. 135
- N. 49 E. 50
- S. 23 E. 42
- S. 36 1/4 E. 135
- S. 6 E. 263 1/2
- N. 89 W. 124



The Draught of a tract of land situate in Ferrmanough township Cumberland County containing four hundred & thirty-nine Acres & six-tenths & the usual allowance of Six per Cent for roads &c. surveyed for William Reed Nov^r the 19th 1785 in pursuance of a warrant from His Excellency the President of the Supreme Executive Council. Dated the 25th day of August 1785.

By Sam^l Lyon, D. S.

John Lukens, Esq^r SURV^r Gen^l

IN TESTIMONY that the above is a copy of the original remaining on file in the Department of Internal Affairs of Pennsylvania, made conformably to an Act of Assembly approved the 16th day of February, 1833, I have hereunto set my Hand and caused the Seal of said Department to be affixed at Harrisburg, this twenty-third day of September, 1907.

Henry Hancock
Secretary of Internal Affairs.